



Royal • Symphony • 7th Heaven • Modern Vila Series
Laminate Flooring

Pre-installation Instruction	2
Installation Instruction	8
Care and Maintenance	9
Product Warranty	10



170-6333 Graybar Rd
Richmond BC, Canada



Tel: 604 276 0833
Fax: 604 276 0633
Toll Free: 1 888 540 0833



info@unifloor.ca
www.unifloor.ca

Responsibility of Homeowners and Installers:

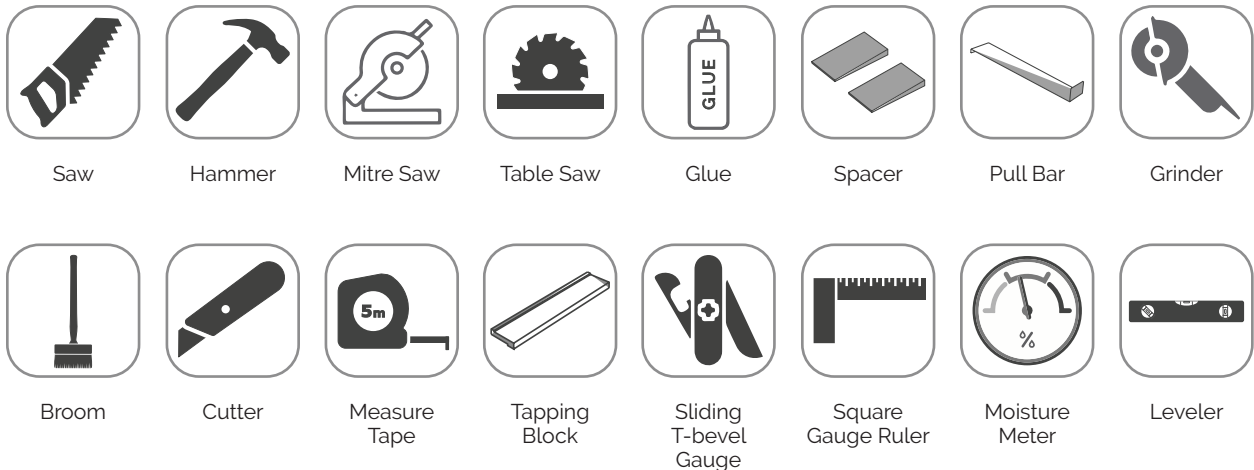
- It is a high recommendation to all installers to read through installation instructions before proceeding installation.
- A visual inspection of different boards by opening several boxes of the product with homeowner or project management is highly recommended before commencing installation.
- Do not proceed with the installation if the product is not satisfying with color or quality. Once the product has been installed, it is considered products are deemed to be accepted by customers. It is the installers' responsibility to communicate with the homeowner during this entire inspection process.
- All AquaFix - Royal / Symphony / 7th Heaven / Modern Vila Series Laminate Flooring products are manufactured to meet practical industry standards with a maximum of 5% of defects as milling tolerance. Throughout the entire installation, any pieces of flooring that appear to contain a manufacturing defect should not be installed.
- It is the responsibility of the installer and homeowner to ensure all job site condition requirements are reached before commencing installation. Manufacture takes no responsibility for defects causing by improper job site preparation and installation procedures.

Do not install any defect or unsatisfactory planks.

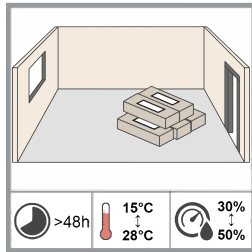
AquaFix accepts no responsibility for any cost related to the installation of an unsatisfactory product.

Part 1 Pre-installation

A: INSTALLATION TOOLS



B: STORAGE



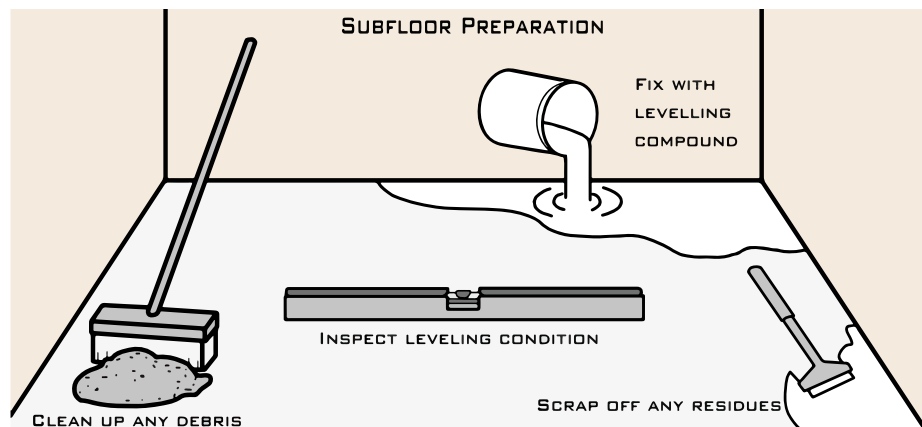
- **Delivery**
 - Please do not deliver flooring to the job site if the job site's climate conditions have not met, as described in section E.
 - During transportation, all packages must be well protected from the weather.
- **Storage before installation**
 - The panels should be stored unopened in the middle of the room at a room temperature of 15°C (59°F)-28°C (82.4°F) and relative humidity of 30%-50% for min. 48 hours.
 - Never store boxes on their sides.

C: APPLICATION



- AquaFix - Royal / Symphony / 7th Heaven / Modern Vila Series Laminate Flooring can be installed: below, on, or above ground level.
- Laminate Flooring consists predominantly of wood particles. Continual and repetitive exposure to dampness causes irreparable damage to the laminate flooring.
- AquaFix - Royal / Symphony / 7th Heaven / Modern Vila Series Laminate Flooring should never be installed in the bathrooms and laundry rooms.
- AquaFix - Royal / Symphony / 7th Heaven / Modern Vila Series Laminate Flooring is intended for **indoor use** as flooring cover only.

D: SUBFLOOR CONDITIONS



- **Evenness**

The subfloor must be fixed to an even condition as follow:

 - Maximum +/- 0.1" per 6.6' (2.5mm per 2m) radius span.
 - Maximum +/- 3/16" per 10' (4.7mm per 3m) radius span.
 - Sand down any irregularities, fill any uneven spot with NWFA approved leveling compound.
 - No crack or deflection is allowed.

- **Existing subfloors**

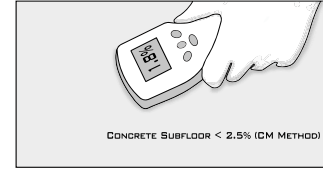
Old fixed carpets, Needle felt carpets are unhygienic and too soft for installing laminate flooring over and must be removed. An installation on PVC and linoleum-coating can only be done if the existing flooring is glued down and has no loose areas.

• Cleanness

The subfloor has to be clean before installation, and free of any debris or any microorganisms.

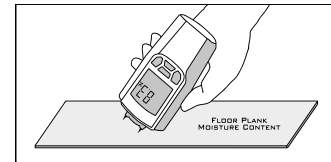
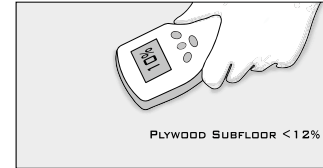
• Installation on concrete

The concrete subfloor must be tested for moisture content using the CM (Calcium Carbide Method) test method and must return a reading of no more than 2.5% as moisture content of the substrate.

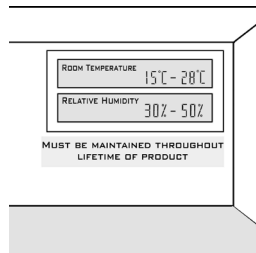


• Installation on wood subfloors

- Plywood subfloor moisture content must not exceed 12%, and the variance in moisture content between the subfloor and the flooring panels must not exceed 3.5%.
- All squeaking noise coming from the substrate should be fixed before the installation of new flooring.
- In Canada, it is required to use a minimum of 5/8" tongue and groove (T&G) plywood or 3/4" T&G OSB for subflooring. The subfloor panels must be securely attached to the joists, free of squeaks, bounces, with maximum deflection of 1.1mm or 3/64".

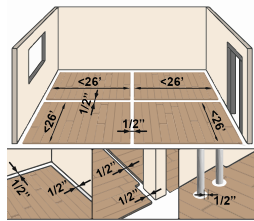


E: TEMPERATURE AND MOISTURE CONDITIONS



- It is also important that the flooring material is stored in the same temperature range as the installation site. Do not deliver flooring to job sites if climate conditions have not been met, as described below.
- Allow the flooring to acclimate at the climate-controlled job site for a minimum of **48 hours** when the desired climate range has met.
- The room temperature should be **15°C (59°F)-28°C (82.4°F)**, with relative humidity between **30%-50%**. These environmental conditions must be maintained for the life of the product. (before, during, and after the installation)
- HVAC system must be fully operating in all areas.

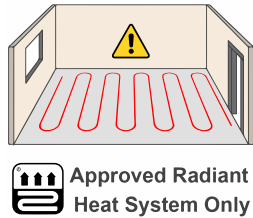
F: SPACE FOR EXPANSION & MAXIMUM SIZE WITHOUT EXPANSION GAP



- Laminate flooring will expand and contract with changes in temperature and humidity. To allow for this, during installation, leaving a 1/2" (12mm) expansion space around the entire perimeter of the floor between the flooring and the walls, and all vertical/fixed objects (e.g., door structures, fireplace, tiles, cabinets, kitchen island, and so on). Undercutting vertical structures might be an option by ensuring no damage to the structural function of the objects.
- **No fixing with the subfloor.**
 - The flooring is laid without using any adhesives or other means of attachment - the tongue and groove are mechanically locked together.
 - Under no circumstances must the panels be glued, nailed, or otherwise fixed to the subfloor.
 - **Do not exceed 30' plank widthwise, and 50' plank lengthwise** without any expansion gap and transition moulding.

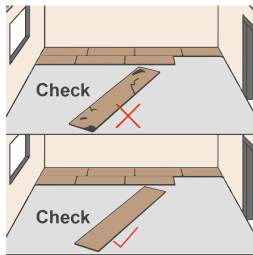


G: INSTALLATION OVER A RADIANT HEAT SYSTEM



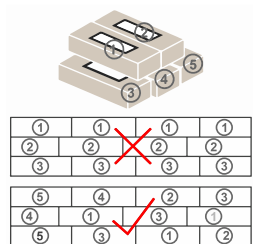
- AquaFix - Royal / Symphony / 7th Heaven / Modern Vila Series Laminate Flooring can be installed over the hydronic and electric type radiant heat systems. All hydronic pipes or electrical wirings must be completely covered and isolated with minimum 3/8"(9.5mm) thick concrete or plywood.
- Ensure that the system is in full working order and has been fully tested and running for a minimum of two weeks before installation. The system should be turned off for 24 hours prior to installation in the install zone.
- It is strongly recommended to attach heat sensors onto the subfloor every 200sf of areas.
- **Never allowed the surface temperature of flooring go above 28°C (82°F)**
- Always adjust the temperature control at 4°C to 6°C gradually increments. Any dramatic temperature will cause damage to flooring.

H: PRODUCTS INSPECTION



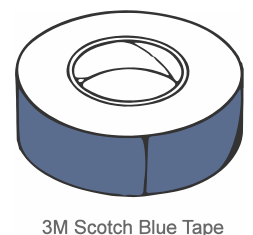
When racking, inspect all boards for visible manufacturing defects. The dealer may replace boards with manufacturing defects in excess of industry standards (5% of total quantity) under the terms of the product warranty. **Once installed, boards will be considered to have been accepted by the homeowner; even the homeowner is not present during installation.** Supplier accepts no responsibility for problems arising from this incorrect handling.

I: PANEL MIXING



- Prepare at least four packs of flooring. Mix panels from different packs during installation.
- We recommend the alternate fitting of the panels from four different packs at the same time.
- Keep alternating the panels across the entire floor area. This guarantees the best possible appearance of your AquaFix - Royal / Symphony / 7th Heaven / Modern Vila Series Laminate Flooring product.

J: USE OF MASKING TAPES

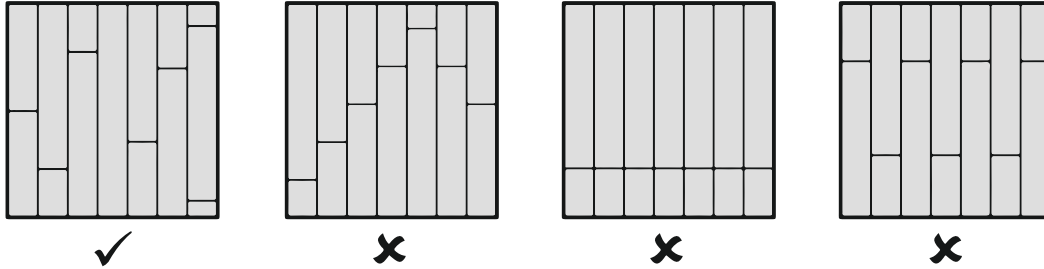


3M Scotch Blue Tape

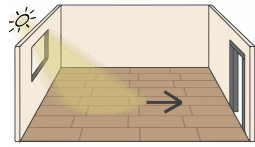
Only 3M scotch blue tape is allowed for all types of installation methods.

K: STAGGER PATTERNS

- Stagger short end (butt joints) with a minimum of 15.75" (40cm) for the adjacent two rows.
- Avoid using boards less than 10" (25.4cm).
- Avoid 'H' style, stair-step style in any adjacent rows.



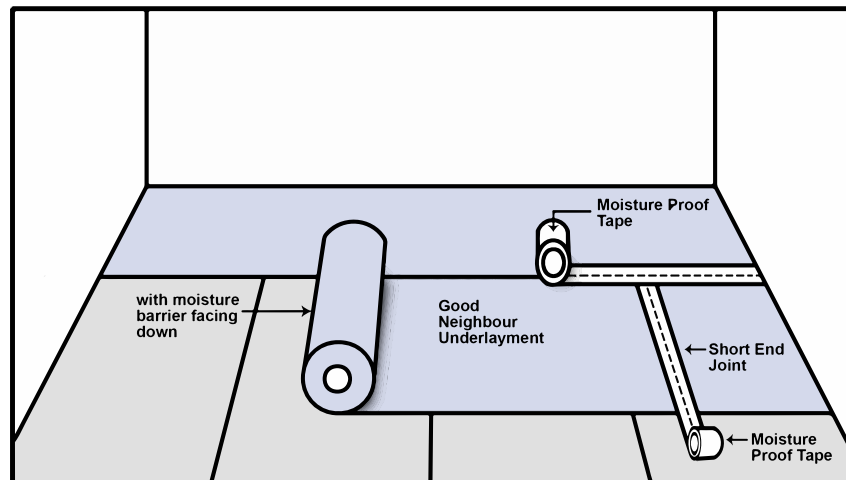
L: LAYING DIRECTION



- The recommended installation direction is lengthwise to the main light source.
- The joints are more visible crosswise than lengthwise to the light source.
- This is only a recommendation because there are also other influences.
- **The laying direction must be perpendicular to the subfloor joists.**

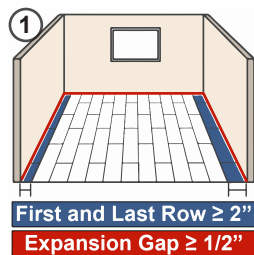
M: UNDERLAYMENT REQUIREMENT & LAYING

- **Underlayment requirement:**
 - The recommended underlay for this flooring material is **Good Neighbour** Underlayment or underlayment products with equivalent or higher specs for all floating installations.
 - The vapor barrier is required for installations over concrete subfloors. (Minimum 6 mil polyethylene film)
 - Addition layer of vapor barrier may be used when proceeding floating installations below ground level.
- **Laying of underlayment (underlayment types with moisture barrier film attached)**
 - Roll out the underlayment in a perpendicular direction to the flooring, with the vapor barrier side facing downward, laying the next row in the same direction as the first row with overlapping the second row on top of the (vapor barrier overlapping edge) of the first row. Peel off the adhesive strip on the edge of 2nd row, and attach it to the poly film portion of the 1st row. Moreover, make sure the underlayments tightly joint together, but without overlapping each other. At the junction of the short sides, moisture-proof mask tape needs to be used.



- When laying underlay with no moisture barrier attached, a 6 mil poly film layer is required over the entire installation area. 2" to 3" of overlap between seams is mandatory. Use waterproof mask tapes to seal all seams.

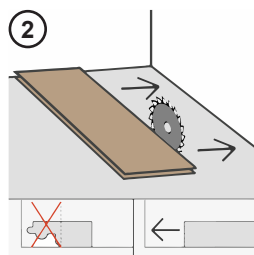
Part 2 Installation (Royal, Symphony & 7th Heaven Series - Installation)



First panel row parallel towards the wall

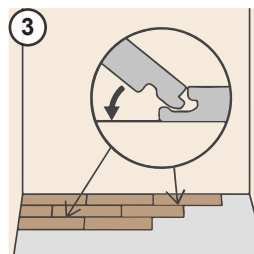
Please ensure a minimum of $>2"$ ($>5\text{cm}$) width of the first and last row. The panels must follow the course of the wall; Dry-wall's unevenness exceeds $1/5"$ (5mm) must be marked on the first row of panels using a spacer. The panels have to be sawn lengthways following the marking. (This will maintain proper expansion space when the first row against uneven spots along the

wall.) The last row of panels at the opposite wall should not be less than $2"$ (5cm) wide; if so, the width of the first row of panels should be cut down lengthways to avoid this. Please make sure that there is a min. distance to the wall of $1/2"$ (12mm). Bear this in mind when calculating the last row.



Installation start:

Remove the tongue of the first panel row and lay it against the wall.

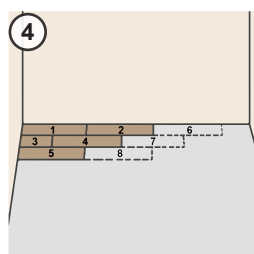


Connection system (longitudinal)

Insert the panel at an angle of approx. 25 degrees and lower the board to lock into place.

Connection system (transversal)

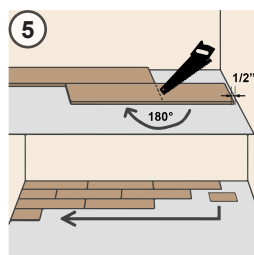
Line the panel up precisely in line with the previous before lowering into place. Use your thumb to lock it into place. An audible clicking sound should be heard when the short butt ends locking system is fully engaged.



Installation with stair-stepping offset

Install the first three rows of panel's sequence according to the numbers in the left drawing. This will ensure that the first three rows of planks will be installed parallel.

This ensures a stable and consistently aligned beginning.

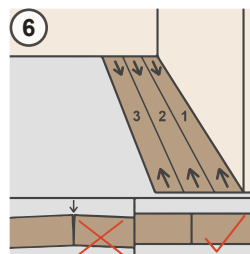


Marking of the panel of the first row

For accurate cutting of the last panel in the row, rotate this through 180 degrees; and with the pattern side upwards, place beside the already installed row. Allow for distance from the wall at the end of the panel. Mark out offset and saw off. Observe a minimum offset of the transverse joint of the second and the third-row min. 25.6" (65cm).

Install the leftover piece of the first row, not before the fourth-panel row. Always saw from the upper surface of the panel (to avoid splintering the edges). Only when using an electric jigsaw, or a hand-held circular saw should the patterned side be placed facing downwards. Start each new row with the leftover piece from the preceding row.

The transverse joints must be offset by at least 15.75" (40cm). Be sure to observe the minimum offset.



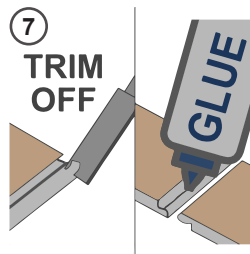
Aligning to the wall

Fix towards the walls by using spacers to achieve the exact parallel position to the wall with the longest run.

Install the first 3 Panel rows before putting them in the final position. This guarantees you a tight connection between the elements.

After exact positioning, parallel the rows with spacers towards the walls.

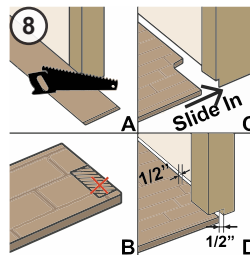
This protects the rows against moving.



No possibility to angle the panels

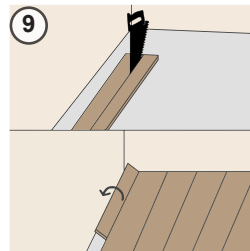
Special cases:

If you are not able to angle the panels (e.g., under a door frame or low fitted radiator), you have to trim off the locking edge of the lip of the bottom groove by using a wood chisel or a small block plane. Run a bead of glue on the modified tongue and groove. Tap the panels tight together by using a hammer and push block or pull-bar. If necessary, secure it with an adhesive tape.



Installation towards door frames

Lay a panel next to the door frame (with the patterned side facing downwards) Cut into the door frame with the straight backsaw. Then slide the panel under the frame with the patterned side upwards. Don't forget to allow for freedom of movement here to $1/2"$ (12mm).

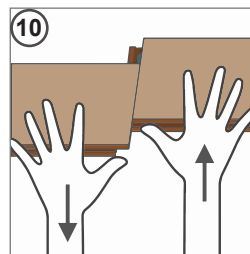


The final panel row

Lay a panel precisely on the previous row. Lay a second panel (original width) on the top of it and draw an exact line for cutting. Cutaway excess wood. Join the panel lengthways. Minimum expansion gap $1/2"$ (12mm).

To do this lay a panel on the previous panel row. Then lay a second panel on the panel to be measured with the tongue to the wall and

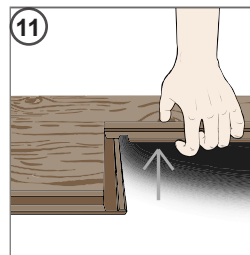
use it as a straight edge. Cutaway excess wood. Minimum expansion gap $1/2"$ (12mm). Insert the panel lengthways and lower down.



Disassembling the panels - Royal Series

5G Drop Lock system is different from the regular laminate drop and go system, follow the steps below carefully to avoid damages to the products:

- Always disassemble the long side joint first by lifting the entire row at 25 degree angle. (Carefully and gently)
- Leave the panels flat laying on the ground.
- Sliding panels apart (see #10 drawing)
- In case panels cannot completely slide apart, lift panels at a slight angle while sliding.



Disassembling the panels - Symphony Series

Regular Drop Lock system is different from the 5G Drop Lock system, follow the steps below carefully to avoid damages to the products:

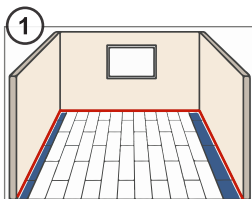
- Carefully and gently lift the short end as shown in diagram #11, while applying pressure onto the short end of the adjacent plank.

Inspection

- Visually inspect all floor surfaces with project management or homeowner and touch up any minor imperfection.
- Visually inspect all expansion spaces along walls and any vertical objects.

Part 2 Installation (Modern Vila Series - Angle Tap Installation)

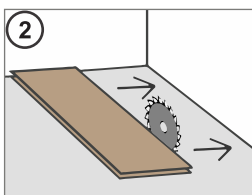
V24-06-1



First and Last Row $\geq 2"$
Expansion Gap $\geq 1/4"$

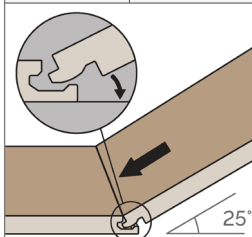
First panel row parallel towards the wall
Please ensure a minimum of $>2"$ ($> 5\text{cm}$) width of the first and last row. The panels must follow the course of the wall; Dry-wall's unevenness exceeds $1/5"$ (5mm) must be marked on the first row of panels using a spacer. The panels have to be sawn lengthways following the marking. (This will maintain proper expansion space when the first row against uneven spots along the wall.)

The last row of panels at the opposite wall should not be less than $2"$ (5cm) wide; if so, the width of the first row of panels should be cut down lengthways to avoid this. Please make sure that there is a min. distance to the wall of $1/4"$ (6mm). Bear this in mind when calculating the last row.

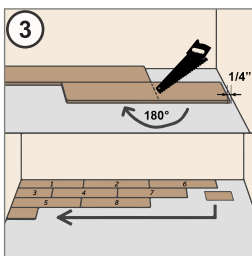


Installation start:
Remove the lengthwise tongue of the first-panel row and lay it against the wall.

Starting the first row:
Connect the panels of the first row on the short side. Insert the panel into the first-panel's groove at an angle of 25° , and lower the panel to lock it into place. Ensure that the row is straight. Please see also the installation video at www.unifloor.ca.



Starting the second & third row:
To start the second row, place the plank lengthwise and angle at approx. 25° before dropping the plank down. Install the next plank by lifting the long side at approx. 25° and dropping down, keeping in mind the short side should be 2-3mm away from the previous plank's end. Pay attention to the positioning of the short sides to ensure the profile pieces are perfectly aligned. Once the plank is lying flat, place the tapping block on the profile and use a hammer to gently tap so that the tongue and groove have a tight connection. Please note that the tapping block should be positioned properly on the tongue so that damage will not occur during a tapping on the short end tongue/groove.

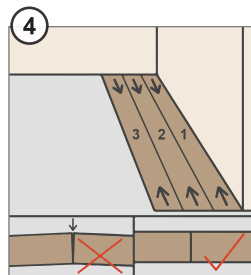


Finishing off the first row
For accurate cutting of the last panel in the row, rotate this through 180° ; and with the pattern side upwards, place beside the already installed row. Allow for distance from the wall at the end of the panel. Mark out offset and saw off.

Installation with stair-stepping offset
Install the first three rows of the panel's sequence according to the numbers in the left drawing.

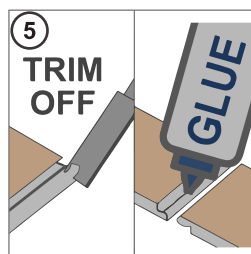
This will ensure that the first three rows of planks will be installed parallel; It also ensures a stable and consistently aligned beginning.

Install the leftover piece of the first row, not before the fourth-panel row. Always saw from the upper surface of the panel (to avoid splintering the edges). Only when using an electric jigsaw or a hand-held circular saw should the patterned side be placed facing downwards. Start each new row with the leftover piece from the preceding row.

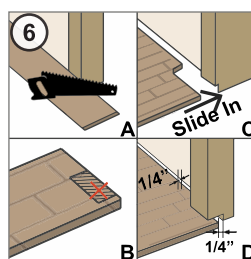


Aligning to the wall
Fix towards the walls by using spacers to achieve the exact parallel position to the wall with the longest run. Install the first 3 Panel rows before putting them in the final position. This guarantees you a tight connection between the elements. After exact positioning, parallel the rows with spacers towards the walls. This protects the rows against moving.

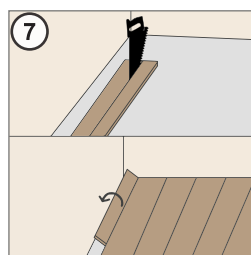
The transverse joints must be offset by at least $15.75"$ (40cm). Be sure to observe the minimum offset.



No possibility to angle the panels
Special cases:
If you are not able to angle the panels (e.g., under a door frame or low fitted radiator), you have to trim off the locking edge of the lip of the bottom groove by using a wood chisel or a small block plane. Run a bead of glue on the modified tongue and groove. Tap the panels tight together by using a hammer and push block or pull-bar. If necessary, secure it with an adhesive tape.

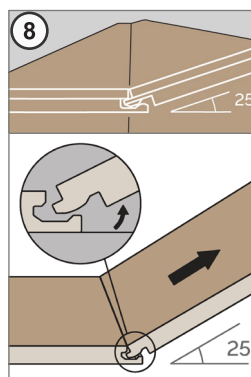


Installation towards door frames
Lay a panel next to the door frame (with the patterned side facing downwards) Cut into the door frame with the straight backsaw. Then slide the panel under the frame with the patterned side upwards. Don't forget to allow for freedom of movement here to $1/4"$ (6mm).



The final panel row
Lay a panel precisely on the previous row. Lay a second panel (original width) on the top of it and draw an exact line for cutting. Cutaway excess vinyl. Join the panel lengthways. Minimum expansion gap $1/4"$ (6mm). To do this lay a panel on the previous panel row. Then lay a second panel on the panel to be measured with the tongue to the wall and

use it as a straight edge. Cutaway excess vinyl. Minimum expansion gap $1/4"$ (6mm). Insert the panel lengthways and lower down.



Disassembling the panels
Lift the whole row of panels lengthwise, at an angle of a 25° -degrees, and disengage the lock from the lengthwise edge. Disassembling the panels on the short side (widthwise) by lifting panels at an angle of 25° -degrees while disengaging the short butt end joint.

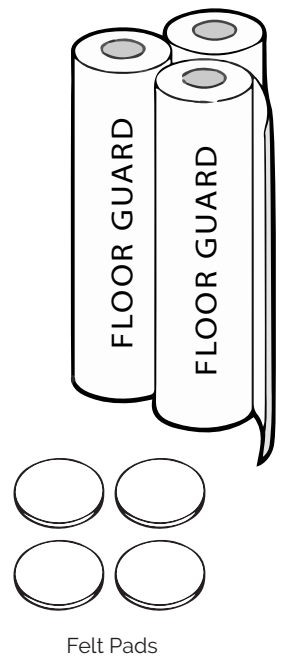
Part 3 Care and Maintenance

A: CLEANING

- Under no circumstances should the floor be cleaned with a wet cloth or mop or be soaked with liquid. Do not use steam cleaners.
- Sweep the floor regularly to keep it free of dust, grit, and other abrasive materials.
- Sweep the floor with a damp cloth towel along with the recommended cleaner. (e.g., Bona laminate cleaner) Apply cleaner to the towel, not directly on the floor.
- Hardened glue-residue can be removed with acetone or a special glue solvent, or usual household cleaners may be used, please avoid scouring agents, wax or polish.
- For regular cleaning and preservation, we recommend Bona Laminate Flooring Cleaner. Larger soiling and persistent stains like color, glue, nail varnish, or oil can easily be removed using acetone or any other alcohol-containing solvents. (Must be approved to be used for laminate flooring according to NWFA guidelines.)
- If a vacuum is used, make sure a soft texture nozzle is attached to avoid scratching marks being left on the surface.

B: PROTECTION

- To prevent damage from heavy static loads, such as hospital beds, pianos, fridges, or heavy dynamic (rolling) loads, it is recommended to use devices and rollers/casters that distribute weight loads evenly. The furniture, appliance, or equipment manufacturer holds the responsibility to ensure the suitability of their devices and equipment, including any potential damage that may occur to the flooring due to their use.
- Use a heavy-duty floor protection membrane (e.g., Floor Guard heavy-duty floor protection) to cover all areas.
- Avoid taping protection membrane directly to the surface of the floor by overlapping each run of the membrane while taping different run together.
- Tape the end run of the membrane along baseboard or shoe base with extreme low adhesive tape.
- An extra layer of plywood, MDF board, might be used along the hallway or high traffic areas where furniture and appliances will be transferred into the premises.
- Putting felt pads on all furniture's legs are highly recommended.
- Keep in mind, the use of area rugs will create an uneven color variation due to the uneven exposure to sunlight.
- Rollable furniture should have soft rubber rollers (type W) in accordance with DIN 12529.
- Use a protective mat to protect areas around office chairs.



C: MAINTENANCE

- At all times, a temperature ranges of 15°C(59°F) to 28°C(82.4°F), and a humidity range of 30% to 50% must be maintained.
- Do not drag heavy objects or furniture across the floor. When moving appliances or furniture, lay a protective item such as cardboard and walk the heavy item across carefully.
- Place dirt absorbing mats at exterior doors to reduce dirt and sand comes on the floor.

Part 4 Product Warranty

A: 30 YEAR LIMITED RESIDENTIAL WEAR WARRANTY

- AquaFix warrants the laminated decorative surface will not wear through under normal residential traffic and usage for 30 years from the purchasing date.

B: 5 YEAR LIMITED LIGHT COMMERCIAL WEAR WARRANTY

- AquaFix warrants the laminated decorative surface will not wear through in the light commercial application. (e.g. salon, clinic, or boutique)
- All AquaFix products give no warranty for any use in any high humidity commercial premises, such as kitchen, bathrooms.
- Any high traffic commercial such as food court, supermarket, industrial zone, or entrance, the hallway of a business office is not considered as a light commercial wear warranty.

C: 100 HOURS TOP-DOWN SURFACE WATER RESISTANCE WARRANTY

- AquaFix warrants that under normal household use (such as everyday household surface spills, moisture from wet mopping, rainy day wet shoes), and following the manufacturer installation and maintenance procedures, AquaFix - Royal / Symphony / 7th Heaven / Modern Vila Series Laminate Flooring will not delaminate or swell more than **8% of its original thickness**.
- Manufacturer's warranty exclusions and conditions apply to this warranty.

D: FILING A CLAIM

- Copy of original purchase receipt must be submitted to the original dealer.
- Coordinate with inspection appointments set by dealer and distribution.
- A minimum of three full planks must be kept for testing purposes.
- AquaFix only accepts claims of defect products, with over 10% of the total quantity of products during the warranty covered period. Customers can claim for the same quantity as defect quantity with the same or similar products. But, in case a specific product has been discontinued, a similar product or portion of the original purchase value, which is equivalent to the defect quantity, can be refunded to the original purchaser.



E: WARRANTY EXCLUSIONS

- All installation must be performed in accordance with the AquaFix - Royal / Symphony / 7th Heaven / Modern Vila Series Laminate Flooring installation manual.
- Proper care and maintenance must be performed following AquaFix - Royal / Symphony / 7th Heaven / Modern Vila Series Laminate Flooring maintenance instruction.
- Dents or other damage caused by rolling or moving excessively heavy items or loads across the floor.
- Click system, plank edge or surface, damage from subfloor leveling, squeaks, bounce, deflections exceeding 1.1mm or 3/64".
- The surface sheen reduction is a natural aging of products and is not considered to be the defect of surface wear.
- Color changes due to exposure to direct strong light is not covered. Avoid using area rugs to eliminate uneven exposure to sunlight.
- Any damage caused by chemical spills, water leakage, surface scratches, cutting, fire, high heel shoes marks, excess dryness, moisture, or serious abuse of any kind is not covered by warranty.
- Labour cost is not covered by this warranty.
- AquaFix is not responsible for the expansion and contraction of panels due to any improper temperature or moisture conditions.
- AquaFix accepts no responsibility for any problems arising from pets, insects, or microorganisms.
- All surface wearing on transition or stair nosings are not covered by this warranty.
- Damage caused by radiant heat system is not covered by warranty.
- The warranty of the products is not transferable and is limited to the original purchaser only.
- In accordance with flooring industry standard, 5% of industrial defect out of the total quantity of products is allowed and, as a result, 10% of wastage during any installation should be calculated before installation is performed.
- Any defect piece is found before installation should not be installed; once products are installed will be deemed to have been accepted by the customer. It is the responsibility of the installer and the homeowner to inspect products' defects before installation. AquaFix accepts no liability for any labour cost for all claims.
- The British Columbia province law governs this Limited Warranty set above. AquaFix assumes no liability for incidental or consequential damages arising from the product's use or non-use.
- Products sold as is; auction goods, discontinued/off the rack, or indirect trades in any kind by unauthorized dealer/individual.
- Failure of providing the original purchasing invoice from Unifloor Trading Inc.
- Under no circumstances will the value of a warranty claim exceed the original purchase price of the product.

There are no other extended warranties except statements set above.



www.unifloor.ca